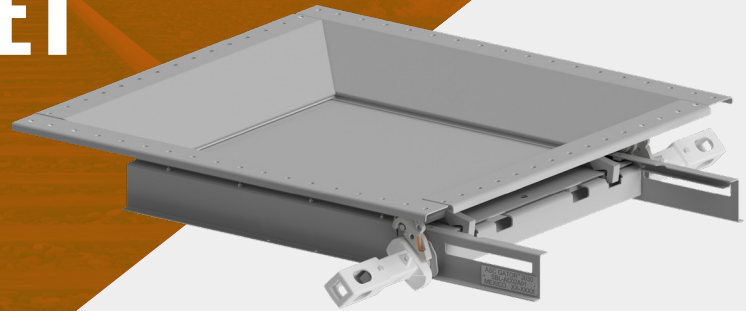


GATOR® OUTLET GATES



30"x 30" GATOR® OUTLET GATE
Part Number: 10019736



Hopper Car

The new GATOR® hopper car outlet gate sharply improves the unloading of grain, fertilizer, corn, and other dry and light commodities.



FEATURES & BENEFITS

- Available in 30"x30" or 42"x42" sizes
- Leak Proof - Reinforced Bolting Flange
- Low Operating Torque
- No Pinion Skipping
- Rolled Flange Construction
- Smooth, Continuous Hopper Surfaces
- Low Wear, High Strength Capstan
- Durable Automatic Lock
- Self-Cleaning
- Light Weight Construction
- Security Seal Tab

DEPENDABLE & EFFECTIVE

The Stucki GATOR® outlet gate features polyethylene door seals for ease of operation, an automatic locking door plate mechanism, and a self-cleaning door wiper.

THE FIRST OF ITS KIND

Perhaps most important is a new security mechanism engineered to deter door-plate theft, the first of its kind in the rail industry.





ADDITIONAL CUSTOMIZED OPTIONS

- Stainless Steel Hardware
- Available in 7 ga Steel
- Variety of Powder-Coated Options
- Food Grade Quality
- Heavy Duty Bolt-on Frame
- Standard 66 Bolt Pattern
- Weld-on Version

ADDITIONAL BENEFITS

- Lighter than currently available models without sacrificing strength
- High quality, flexible UHMW seals that are easy to replace
- Low torque operation for easy unloading and closing
- Efficient design to reinsert door to catch on gears (if door needs to be reassembled)
- Secure and strong locking mechanism that can be easily seen track-side to indicate that the door is locked
- Doors can be removed without removing operating shaft
- Cam system ensures that the locks do not drag on the gate door while opening and closing
- AAR S-233 approved outlet gate



42"x 42" GATOR® OUTLET GATE
Part Number: 10030937

TECHNICAL SPECIFICATIONS

	30" x 30" Gate Specs	42" x 42" Gate Specs
Industry Size Reference	30" x 30"	42" x 42"
Bolt-On Working Points	45-3/8" x 43-3/8"	45-3/8" x 43-3/8"
Weld-On Working Points	45-3/8" x 43-3/8"	45-3/8" x 43-3/8"
Actual Gate Opening Size	31-3/4" x 29-3/4"	41-7/8" x 39-7/8"
Bottom Frame Opening	34-1/2" x 32-7/8"	48-3/4" x 43-7/16"
Flange to Flange Height	9-3/4"	7-3/8"
Overall Gate Height	10-3/4"	7-15/16"
Number of Bolt Holes	66	66
Weight	345 lbs.	575 lbs.
Centerline of Opening to Edge of Fully Open Door	53-13/16"	69-11/16"

