

RetroXT™ TANK CAR SIDE BEARINGS

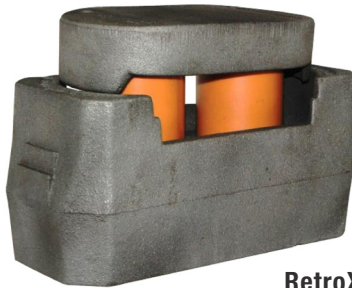


TANK CAR



RetroXT LP Drop-In

Quick and easy retrofit is a low-cost solution and meets AAR extended travel requirements.



RetroXT SP Drop-In



RetroXT LP Bolt-On



RetroXT LPC Drop-In

LIKE NEW, BUT AT A FRACTION OF THE COST

Extend the life of your investment. The RetroXT™ tank car line of side bearing solutions from A. Stucki Company provides a low-cost retrofit solution for a broad variety of tank cars and covered hoppers equipped with friction blocks.

This quick and easy retrofit meets AAR extended travel requirements and is designed to improve curving and wheel loading to prevent derailments. The elastomeric design provides the highest level of vertical damping for twist and roll control available to the application.

Did you know you could gain the advantages of new “extended travel” side bearings for older car designs? Older car designs can be retrofitted more affordably than ever before without the need to change cages, and still have the advantages of conventional extended travel side bearings.

We manufacturer to exacting specifications, which means retrofitting is easy. Installation involves no expensive labor-involving burning, grinding, or drilling holes.

By installing our RetroXT line of tank car side bearings, our customers have gained a cost savings of more than \$600 per car compared to a conventional side bearing upgrade.



www.stucki.com



Ofc: 412-424-0560



sales@stucki.com

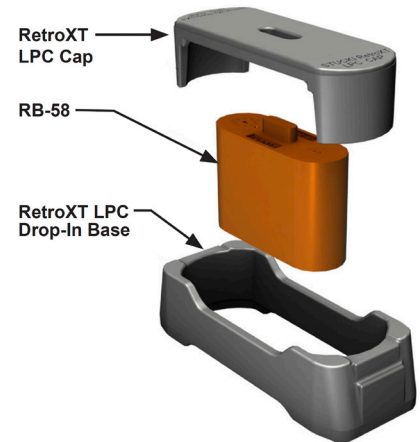
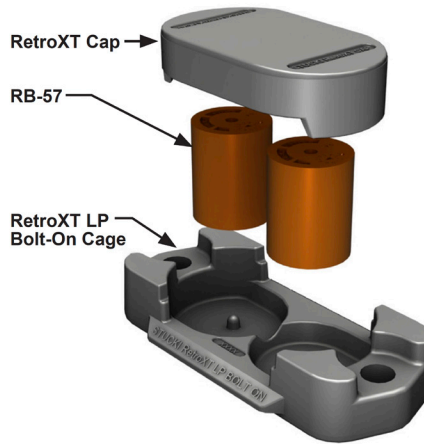
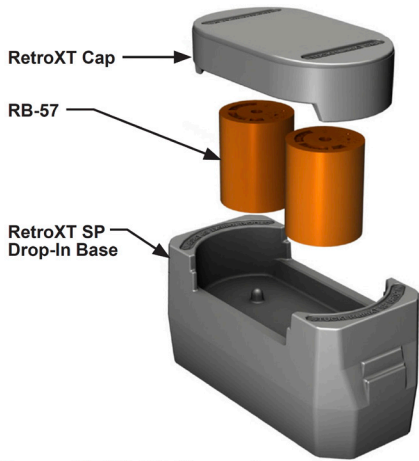


360 Wright Brothers Dr. Moon Township, PA 15108



TECHNICAL SPECIFICATIONS:

MODELS AVAILABLE



RetroXT™ SP Drop-In

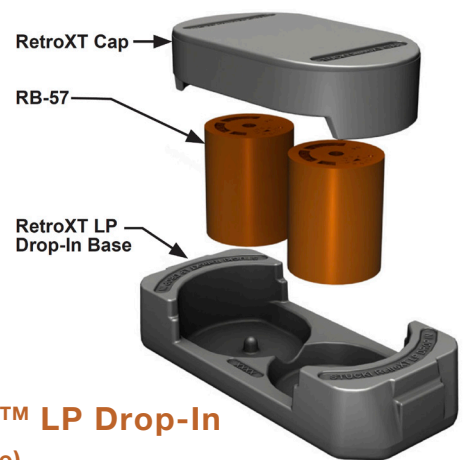
- Force at setup height = 4,500 lb per side bearing (at 75°F after initial relaxation)
- Meets requirements of M-948 when installed on cars with a minimum car body weight of 21,176 lb
- Must be installed in accordance with installation instructions for Stucki RetroXT SP Drop-In Side Bearings

RetroXT™ LP Bolt-On (Low Profile)

- 8.5" hole center spacing standard
- 1" nominal holes for 7/8" fasteners
- Max clamping force must not exceed 30,000 lb for fasteners
- Use standard Grade 5 bolts and washers or break-away head type bolts
- Force at setup height = 4,500 lb per side bearing (at 75°F after initial relaxation)
- Meets requirements of M-948 when installed on cars with a minimum car body weight of 21,176 lb
- Must be installed in accordance with installation instructions for Stucki RetroXT LP Bolt-On Side Bearings

RetroXT™ LPC Drop-In (Low Profile Compact)

- Force at setup height = 4,500 lb per side bearing (at 75°F after initial relaxation)
- Meets requirements of M-948 when installed on cars with a minimum car body weight of 21,176 lb
- Must be installed in accordance with installation instructions for Stucki RetroXT LPC Drop-In Side Bearings



RetroXT™ LP Drop-In (Low Profile)

- Force at setup height = 4,500 lb per side bearing (at 75°F after initial relaxation)
- Meets requirements of M-948 when installed on cars with a minimum car body weight of 21,176 lb
- Must be installed in accordance with installation instructions for Stucki RetroXT LP Drop-In Side Bearings

FEATURES & BENEFITS

- Manufactured in one convenient 4500 lb. preload, which meets all AAR extended travel requirements
- Controls truck hunting at higher speeds
- Your inventory is simplified with shared caps and columns
- Simple to install
- Universally adapts to any size body bearing wear plate or wedge