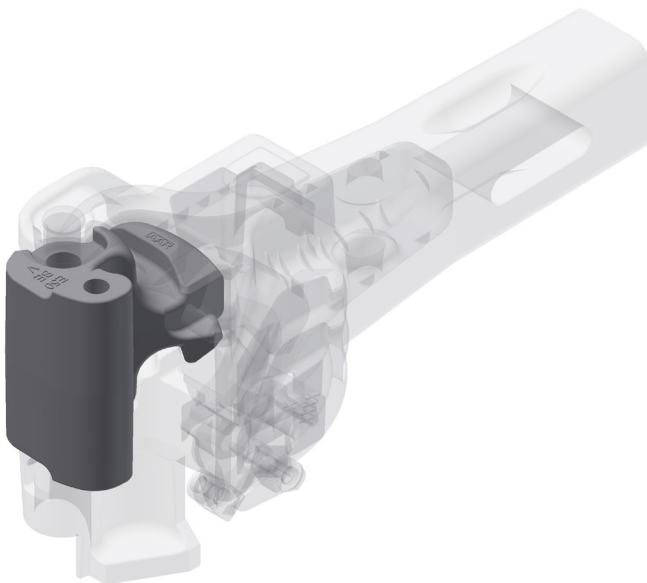


E50BEV KNUCKLE



MULTI-CATEGORY PRODUCT

Stucki's E50BEV Knuckle interacts smoothly with existing knuckles and operates seamlessly with existing couplers, meeting AAR M-211 standards for safe and reliable railcar coupling.



E50BEV KNUCKLE

Part Number: 10018222

FEATURES & BENEFITS

- Integrates smoothly with existing knuckles
- Reduces the need for system-wide upgrades
- AAR M-211 Compliant
- Ensures safety and reliable performance
- Interchangeable with E type couplers
- Passed required M-211 and M-216 testing
- Dimensions: 11.00" tall, 8.53" wide, and 11.83" deep
- Weight: 90 lbs

SEAMLESS INTEGRATION

A. Stucki Company is making a splash in the rail industry with their innovative E50BEV coupler knuckle. This new design is built to seamlessly integrate with existing knuckles, ensuring compatibility across the board. The E50BEV adheres to the stringent AAR Specification M-211, guaranteeing safety and reliability. By focusing on backwards compatibility, Stucki's E50BEV knuckle offers a proactive solution to the industry's ever-evolving draft systems connecting locomotives and railcars.



www.stucki.com



Ofc: 412-424-0560



sales@stucki.com



360 Wright Brothers Dr. Moon Township, PA 15108

