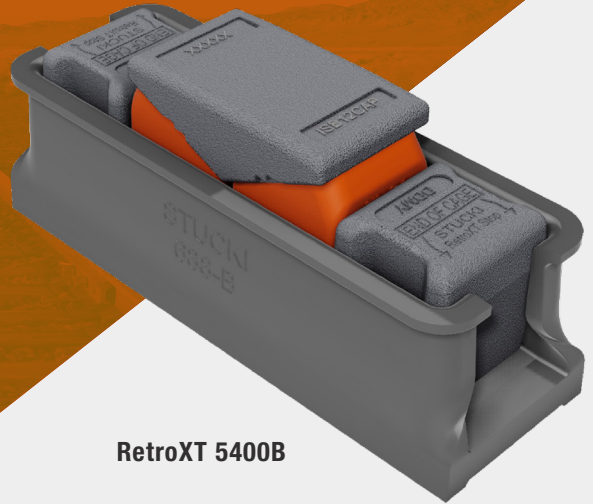


RetroXT™ FREIGHT CAR SIDE BEARINGS



FREIGHT CAR

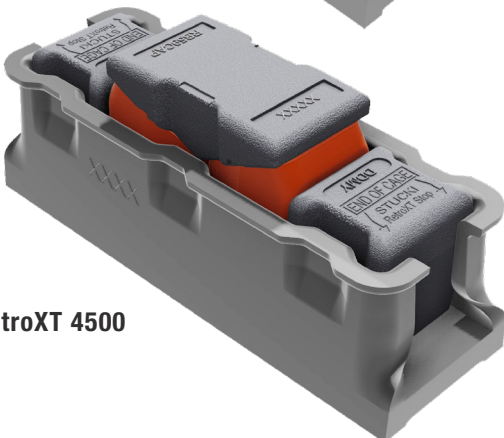


RetroXT 5400B

Designed to improve curving and wheel loading which can help prevent derailments.



RetroXT 5400C



RetroXT 4500

LIKE NEW, BUT AT A FRACTION OF THE COST

Make your old side bearings like new, but at a fraction of the cost. The RetroXT™ freight car line of side bearing upgrade kits provides a lowcost retrofit solution for a broad variety of freight cars.

These upgrade kits are easy to install and meet the AAR extended travel requirements. They are designed to improve curving and wheel loading which can help prevent derailments. This elastomeric design provides the highest of vertical dampening for twist and roll control available to the application.

UPGRADE YOUR FLEET

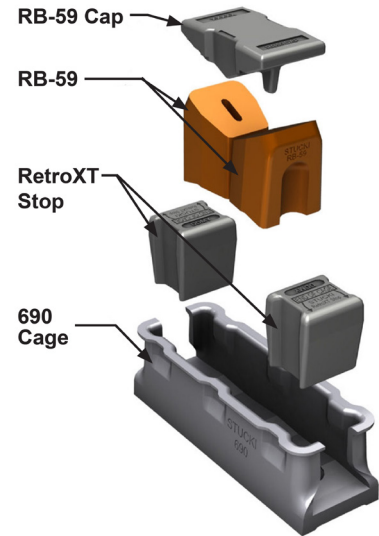
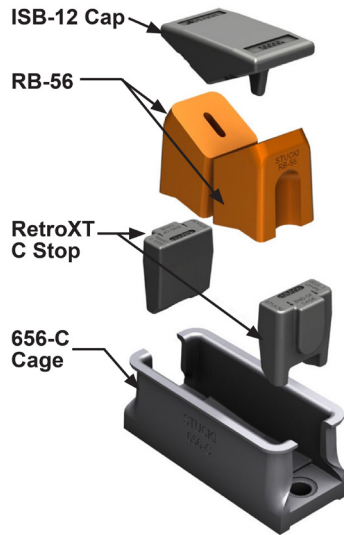
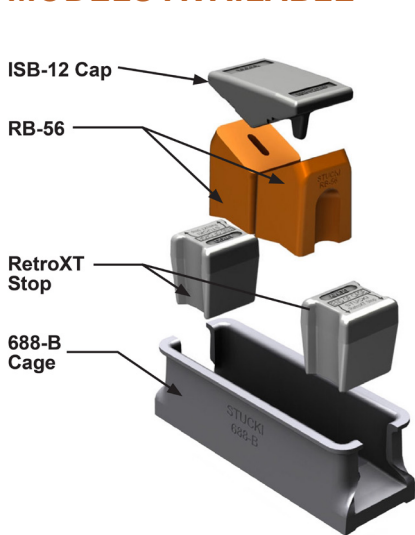
Now we can offer customers an alternative for their existing fleet. Many older car designs can be accommodated with our upgrade kits. What's the result? A quality, safe, and affordable alternative to replacing the entire side bearing.

We manufacture to exacting specifications at our facility, which means retrofitting is easy. Installation involves no expensive labor--involving burning, grinding, and drilling of holes.



TECHNICAL SPECIFICATIONS:

MODELS AVAILABLE



RetroXT™ 5400B

- Force at 5-1/16" = 5,400 lb / side bearing (at 75°F initial relaxation)
- Meets requirements of M-948 when installed on cars with a minimum car body weight of 25,000 lb
- Neither longitudinal nor lateral motion impeded by solid stops (in normal operation)
- Must be installed in accordance with installation instructions for Stucki RetroXT 5400B resilient side bearings
- Fits into a standard 688-B double roller cage

RetroXT™ 5400C

- Force at 5-1/16" = 5,400 lb / side bearing (at 75°F initial relaxation)
- Meets requirements of M-948 when installed on cars with a minimum car body weight of 25,000 lb
- Neither longitudinal or lateral motion impeded by solid stops (in normal operation)
- Must be installed in accordance with installation instructions for Stucki RetroXT 5400C resilient side bearings
- Fits into a standard 656-C single roller cage

RetroXT™ 4500

- Force at 5-1/16" = 4,500 lb / side bearing (at 75°F initial relaxation)
- Meets requirements of M-948 when installed on cars with a minimum car body weight of 21,176 lb
- Neither longitudinal nor lateral motion impeded by solid stops (in normal operation)
- Must be installed in accordance with installation instructions for Stucki RetroXT 4500 resilient side bearings
- Fits into a standard 690 cage

FEATURES & BENEFITS

- Fits 100T, 110T, and 70T general freight car applications
- Upgrade kits drop into 688-B, 656-C, or 690 cage
- Meets all AAR extended travel requirements
- Controls truck hunting, improves curving, and wheel loading
- Your inventory is simplified with shared caps and resilient blocks
- Universally adapts to any size body bearing wear plate or wedge

